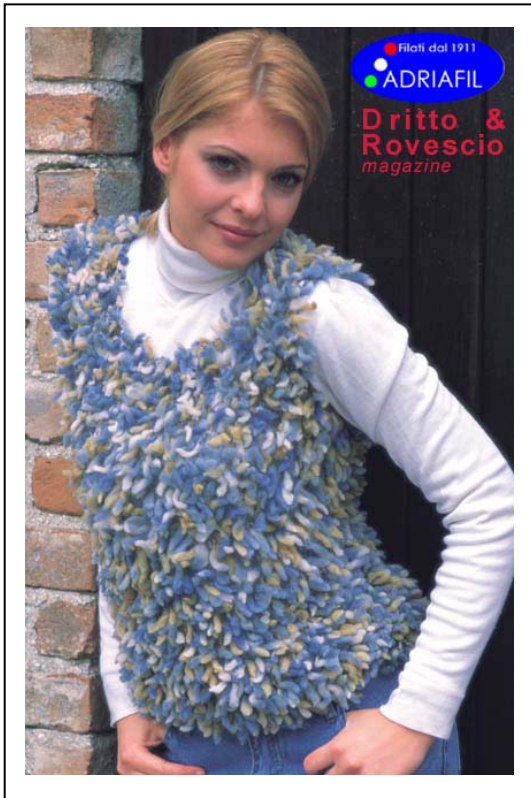


“Marge” in Explosion



Selman's Creative Craft

Size 42 (44 - 46)

Adriafil Yarn - “ **Explosion** ”

200gms Explosion shade 81 (Blue)

Knitting Needles – 1 pair 5½ mm
– 1 pair 4 mm

Tapestry Needle

Tension – 13sts and 16 rows =10cm square in stocking stitch using 5½ mm needles.

Abbreviations

k	knit	p	purl
st(s)	stitch(es)	beg	beginning
inc	increase	dec	decrease
rem	remaining	st st	stocking stitch
alt	alternate	cont	continue

Pattern Stitches :-

Stocking stitch (1 row knit, 1 row purl)

Back

Using 4mm needles cast on 63 (65-67) sts and work in st st for 1 cm, leaving the yarn “fluff” on reverse of work. Change to 5½ mm needles, cont in st st. until work measures 34 (36-38) cm.,

Shape armholes: cast off 3 sts at beg of next 2 rows, 2 sts at beg of foll 4 rows and 1 st each end of next row. When work measures 6cm. from armhole shaping, cast off centre 5 (7-9) sts, k to end. Work sides separately; p 1 row. Cast off 3 sts at neck edge on next row and 2 sts on alt row. Dec 1 st on next 2 alt rows. When armhole measures 17 cm, **Shape shoulder:** cast off 7 sts at side edge of next and alt row. Rejoin yarn and work left side reversing shapings.

Front

Work to match the back.

Making up

Join shoulder and side seams.

